

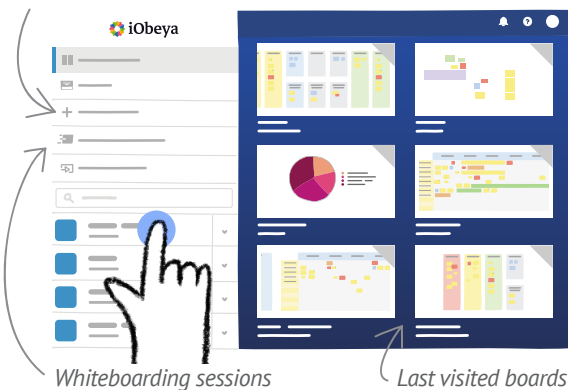
1. Access iObeya using the following URL

2.
Connect using your
user credentials



3. Select a room from the list

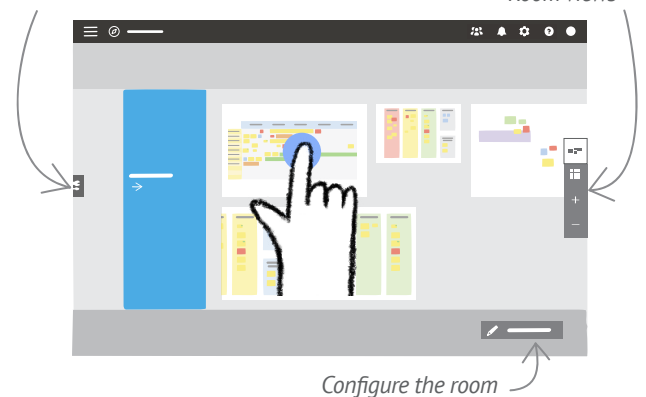
Create a room (optional)



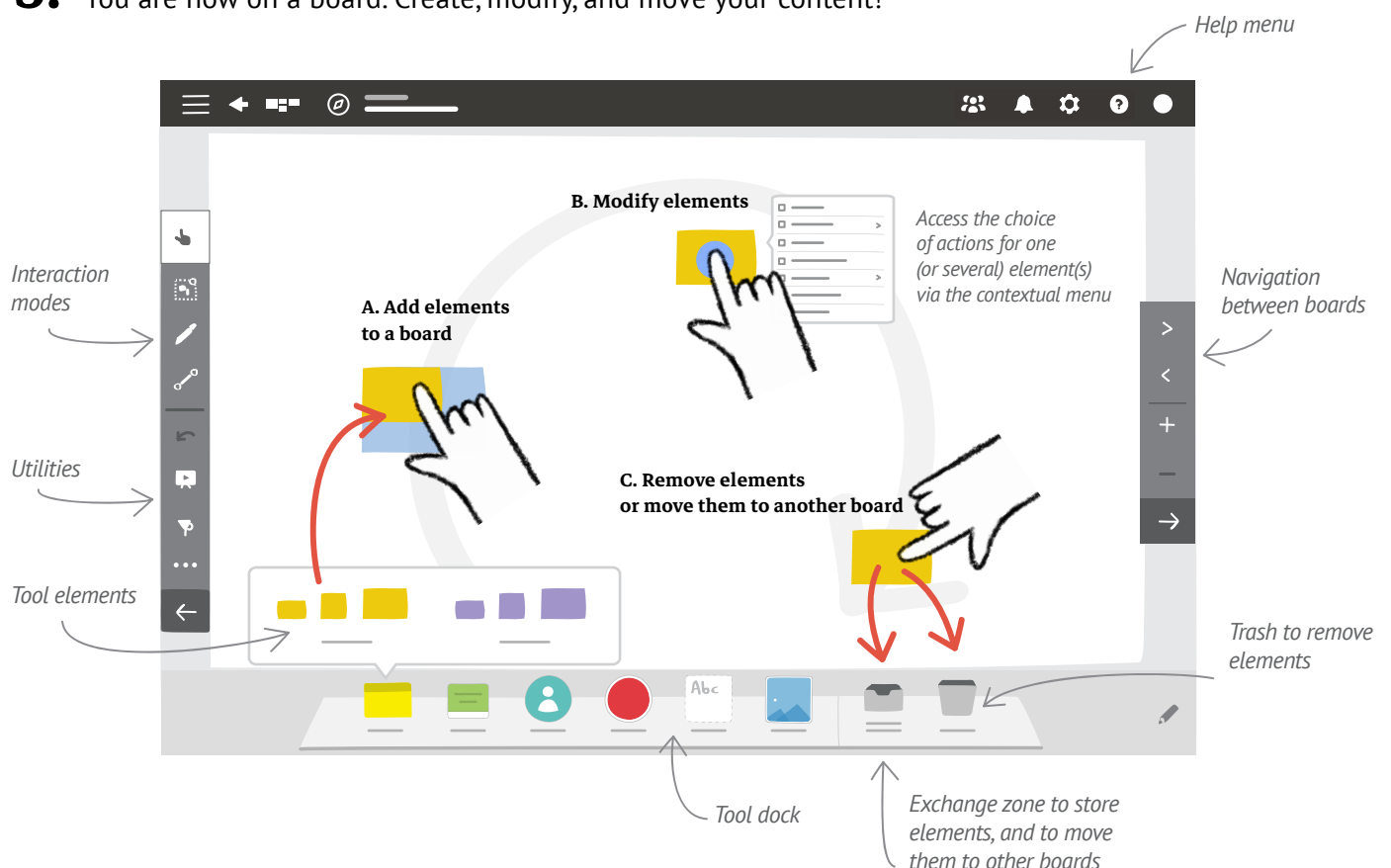
4. Select a board in your room

Utilities

Room views



5. You are now on a board. Create, modify, and move your content!



Different interaction mode

- "Pan and move" mode: *default mode for simple interaction*
- "Multiple selection" mode: *to select several elements at once, and manipulate / modify them as a group*
- "Ink" mode: *to write, draw, and annotate*
- "Link" mode: *to link elements together*

Utilities

- Meeting animation, Brainstorming & Voting
- Filter
- Legend
- Slideshow
- Import / Export data
- Export as images
- Undo
- Redo

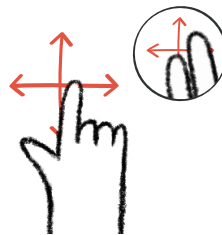
Manipulating content and gestures



Click on / Tap
To select or display the contextual menu



Double Click / Double Tap
To zoom or access the first action of the contextual menu



Pan and move
You can also pan around the board using 2 fingers



Zoom / Spread-Pinch

Useful links

Learning Paths: <https://center.iobeya.com/training/>
Videos : <https://center.iobeya.com/videos/>

The different tools available on a board

Your tools are configurable. Please contact your iObeya room administrator to configure them.

